

# NEMA 12-13 MTRX CABINETS

6500 MX

## Oil & dust tight metric modular cabinets

The Mtrx series cabinets are used to protect equipment against oil, dust and light water splashing. The cabinets are available in steel, brushed or powder coated stainless steel and with EMI/RFI shielding.

Single and double bay cabinets are available in standard and disconnect configurations. Mtrx cabinets can be ordered in complete kits or can be fully customized by ordering each cabinet part separately.

Mtrx cabinets are designed and manufactured in North America, exclusively by Eurobex.

**UL Listed.**  
**C.S.A. Certified**  
**NEMA 12/13**  
**IP 55**



e-mail  
sales@  
codeelectric  
.com  
for details

Call us  
toll free  
1-888-222-  
CODE (2633)



# mtrx mtrx mtrx

Single bay modular cabinet      Modular disconnect cabinet      Custom modular cabinet

Depths available for each size		HEIGHT					
		700mm	1400mm	1600mm	1800mm	2000mm	2200mm
WIDTH	400mm Single bay			400, 500 600	400, 500 600, 800	400, 500 600, 800	500, 600 800
	600mm Single bay		400, 500 600	400, 500 600, 800	400, 500 600, 800	400, 500 600, 800	500, 600 800
	700mm Single bay		800			600, 800	800, 900
	800mm Single bay	600	400, 500 800	400, 500 600, 800	<b>400, 500</b> <b>600, 800</b>	<b>400, 500</b> <b>600, 800, 900</b>	500, 600 800
	1000mm Single bay			400, 500 600	400, 500 600, 800	<b>400, 500</b> <b>600, 800</b>	500, 600 800
	1200mm Double bay	600	400, 500	400, 500 600, 800	400, 500 600, 800	400, 500 600, 800	500, 600 800
	1600mm Double bay		400, 500		500, 600 800	400, 500 600, 800	

Sizes in **red** are also available as disconnect cabinets.

**CODE ELECTRIC** PRODUCTS

Data subject to change without notice.

## Mtrx special cabinets

The Mtrx series cabinets can be customized to meet your specific requirements.

Doors, back covers, side covers, and mounting panels, can be ordered with custom cut-outs, at little or no extra cost!\*

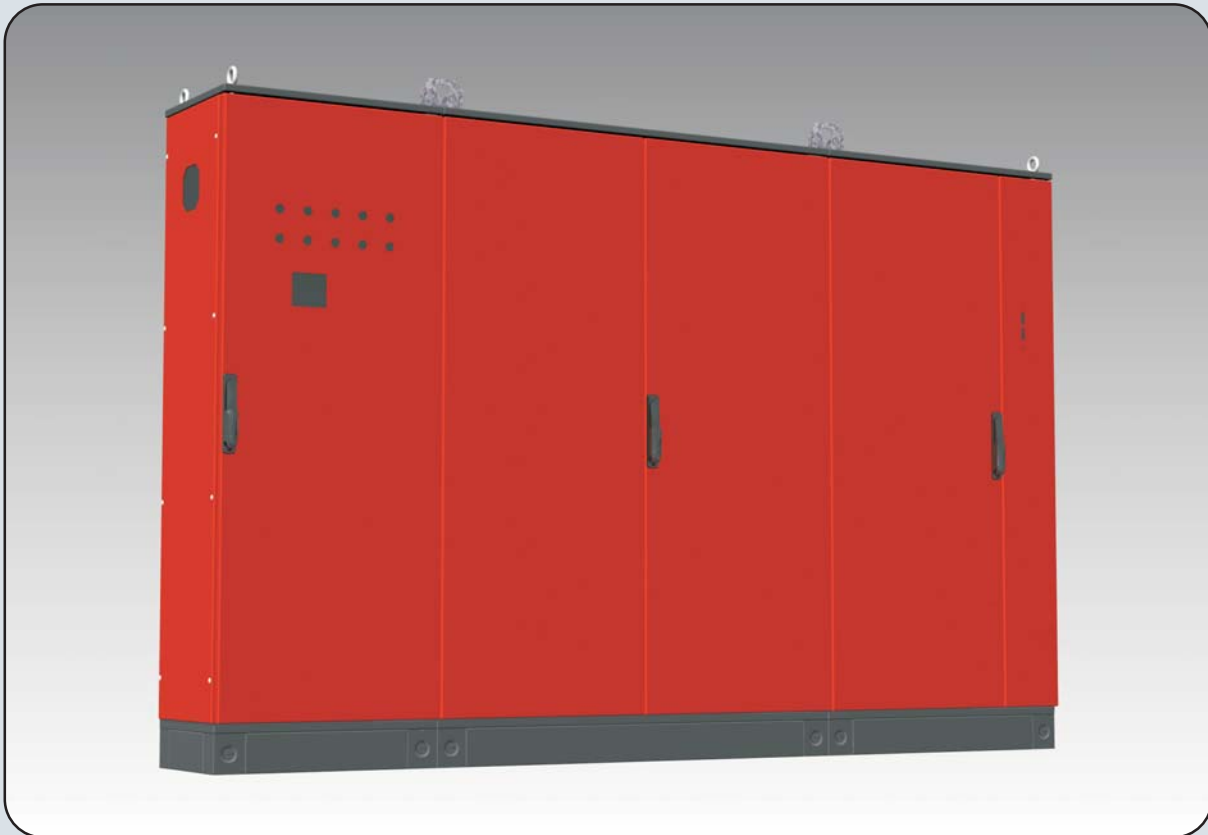
\* Depending on quantity.

Cabinets with custom cut-outs offer many advantages:

- Reduced assembly labor
- Production consistency
- Reduced production time
- Cut-out edges are powder coated because they are pierced before the painting process.

Most components can be modified upon request. Eurobex can also install various press fit fasteners, windows, grills, fans, environment control units and a wide variety of other accessories.

Cabinets can also be finished with special colors and textures.



e-mail  
sales@  
codeelectric  
.com  
for details

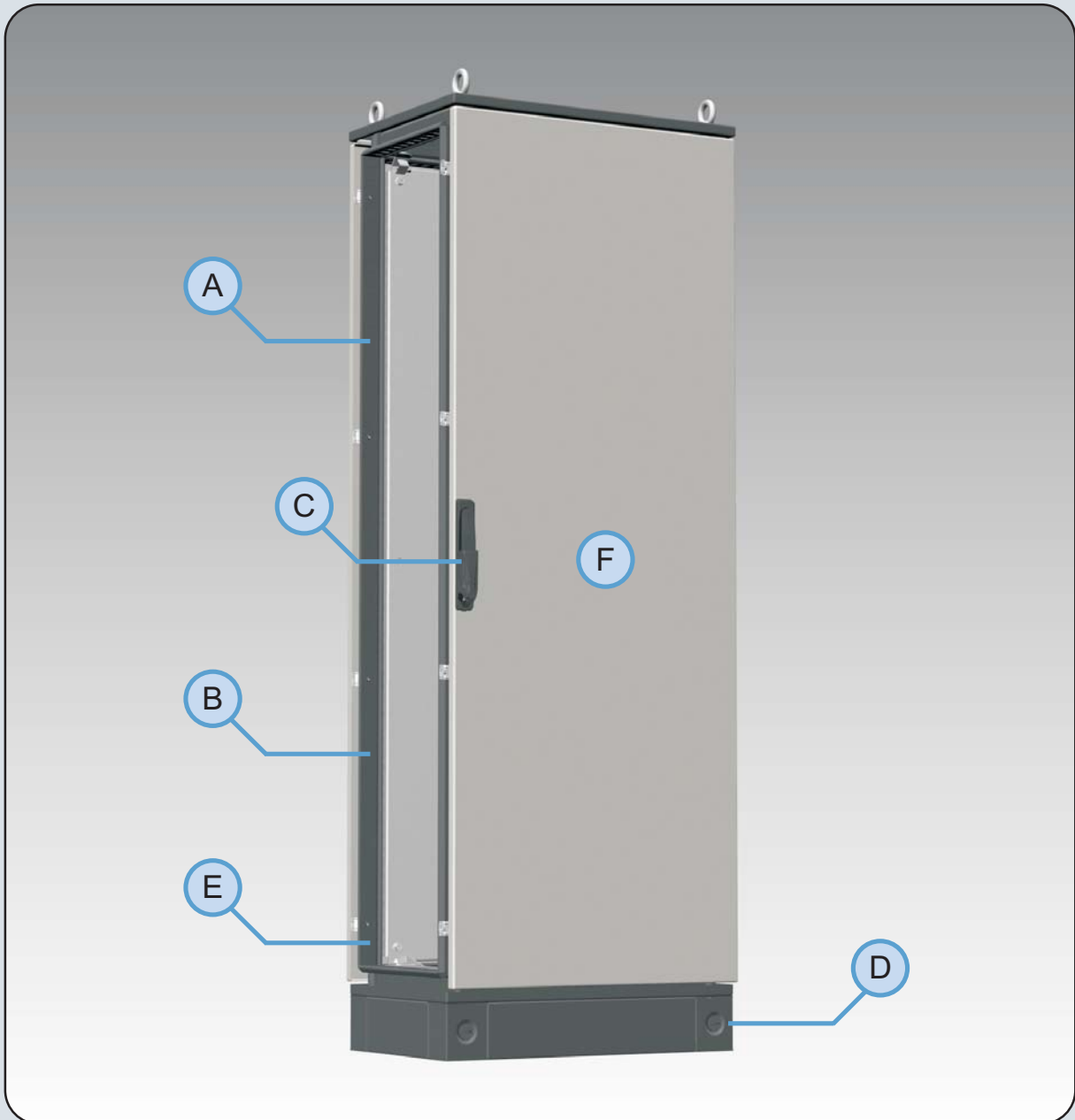
Call us  
toll free  
1-888-222-  
CODE (2633)

**CODE ELECTRIC**  
Products

Data subject to  
change without  
notice.

## NEMA 12-13 MTRX CABINETS

Why choose Mtrx modular cabinets?



- A. Powder coated electro-galvanized steel frame
- B. Exclusive stiffening rib all around the inner edges (4.5mm)
- C. Standard key lock handle with padlock provision
- D. Exclusive ¼ turn plinth system
- E. Hole pattern can accommodate heavy duty (up to) M8 clip nuts  
Hole pattern also includes M6 self tapping holes.
- F. Manufactured and customized in North America.

Data subject to  
change without  
notice.



e-mail  
sales@  
codeelectric  
.com  
for details

Call us  
toll free  
1-888-222-  
CODE (2633)

## A. Powder coated electro-galvanized steel frame



Mtrx cabinet frames are made of powder coated electro-galvanized steel.

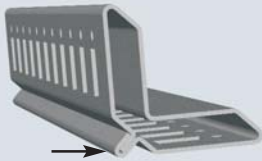
This unique feature offers exceptional corrosion resistance. The advantages of galvanized steel

are complemented by the durability of a quality "Sandtex" powder coat finish.

"Sandtex" is a lightly textured finish which was chosen for its modern appearance.

e-mail  
sales@  
codeelectric  
.com  
for details

## B. Exclusive stiffening rib all around the inner edges



Mtrx cabinet frames are reinforced by an exclusive stiffening rib.

This special rib consists of three thicknesses of electro-galvanized steel, totaling 4.5mm.

The roller formed frame is fully symmetrical. Therefore, the stiffening rib is present on the inner edges of all horizontal and vertical posts. The result is a rigid, practical and aesthetic frame.

Call us  
toll free  
1-888-222-  
CODE (2633)

## C. Standard key lock handle with padlock provision



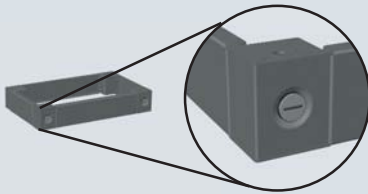
A key lock handle with a padlock provision is included with every cabinet master door.

A dust cap protects the locking mechanism from contaminants. The handles are keyed alike.

A wide variety of optional handles, escutcheons and knobs are available.

Eurobex also introduces the E.line electromechanical high-end computer locking system.

## D. Exclusive 1/4 turn plinth system



Mtrx cabinets feature an exclusive quarter-turn plinth system. This system was engineered by Eurobex to facilitate the installation and removal of plinth covers. Please note that plinths must

always be ordered separately, they are not included with the standard cabinet kit.

Vented plinths and watertight plinths are also optionally available.

## E. Hole pattern for front inserted M8 cage nuts



A hole pattern is present on all posts of the Mtrx cabinet frame. This pattern consists of a set of two holes. The first is made to accommodate heavy-duty front inserted cage nuts, up to M8.

The second hole accommodates self-tapping screws, size M6.

Front inserted cage nuts and self-tapping screws can be ordered separately, see catalog page 60-61.

## F. Manufactured and customized in North America



The Mtrx modular cabinet system was developed by Eurobex, to be produced in our North American manufacturing facilities. This shortens lead time and allows us to be flexible.

Mtrx cabinets can be customized to your specifications. We can manufacture cabinets with special cut-outs or colors, with custom press fit fasteners, and a wide variety of accessories.

**There is more! Turn the page for more reasons to choose Eurobex.**

Data subject to  
change without  
notice.

## NEMA 12-13 MTRX CABINETS

Why choose Mtrx modular cabinets? (continued)



- G.** Heavy-duty self-retaining die cast hinges
- H.** Self-supporting inner panel for easy installation
- I.** Quality poured in place gasket
- J.** Leveling feet included with cabinet kits and bases
- K.** 100 cabinet sizes available in steel and stainless steel
- L.** Wide selection of accessories, including 96 types of handles, A full line of grid straps and electronic racks.



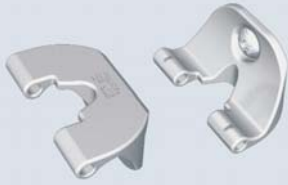
e-mail  
sales@  
codeelectric  
.com  
for details

Call us  
toll free  
1-888-222-  
CODE (2633)

**CODE ELECTRIC**  
products ltd.

Data subject to  
change without  
notice.

## G. Heavy-duty self-retaining die cast hinges



Mtrx cabinets feature heavy-duty die cast hinges which were designed to maximize the door's load capacity. These hinges are used on solid and window doors.

Much stronger than sheet metal hinges, this system was engineered for industrial use. The self-retaining hinge pin can easily be pulled out to remove the door.

e-mail  
sales@  
codeelectric  
.com  
for details

## H. Self-supporting inner panel for easy installation



Mounting channels are bolted to the bottom of the cabinet to support the inner panel during its installation. This facilitates assembly and allows one or multiple panels to

be installed at any depth within the cabinet. Galvanized, brushed stainless steel and powder coated stainless steel inner panels are available.

Call us  
toll free  
1-888-222-  
CODE (2633)

## I. Quality poured in place gasket



Mtrx cabinets feature a robotically poured-in-place gasket which ensures a complete and durable seal. This sealing technology has been used throughout the Eurobex

product line for several years because of its long-term durability. Indeed, poured gaskets do not suffer from the compression problems which affect old-fashioned neoprene gaskets.

## J. Leveling feet included with cabinet kits and bases



Practical leveling feet are included with Mtrx cabinet kits and bases. These die cast leveling feet allow adjustment for uneven floors. Other types of feet can be ordered separately.

They can also be interchanged with optional caster wheels (page 72) or a variety of plinth bases (pages 51 to 55).

## K. 100 cabinet sizes available in steel and stainless steel



The Mtrx line is complete, with 100 cabinet sizes in steel, brushed stainless steel and powder coated stainless steel. Use steel cabinets for typical installations.

Use brushed stainless steel in sanitary environments such as food processing plants. Use powder coated stainless steel in corrosive environments such as refineries.

## L. Wide selection of accessories, including 96 handles



Eurobex offers more accessories to complete your Mtrx cabinet system. Eurobex boasts a full line of handles, brackets, angles, shelving, lighting, environment control units, grid straps, electronic racks and more!

Indeed, 96 different handles are available to suit your specific requirements. Eurobex introduces the new e.line electromechanical locking system, a high-tech solution which allows remote access control via the internet.

Data subject to  
change without  
notice.

**CODE ELECTRIC**  
products ltd.